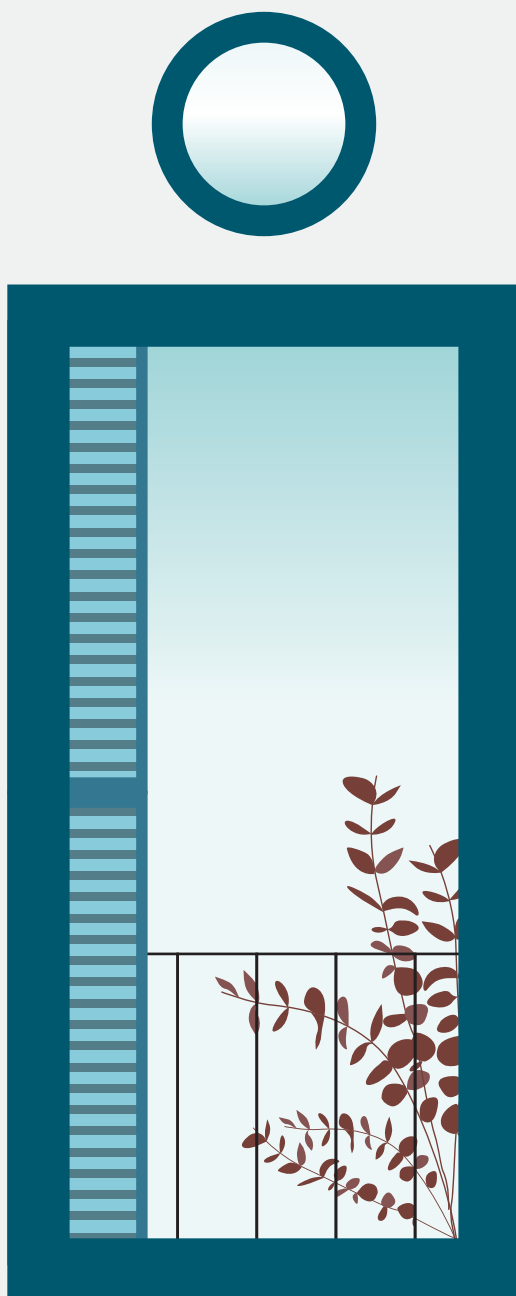


de-
sign
at
ho-
me



.annud

Index

The entrance	
<i>Kapoor at home</i>	06
<i>Connery at home</i>	08
The living room	
<i>Kapoor at home</i>	14
The kitchen	
<i>Sapporo at home</i>	18
The hall	
<i>Kapoor and Shell at home</i>	22
The studio library	
<i>Shell at home</i>	26
<i>Kapoor at home</i>	32
<i>Balloon at home</i>	36
A break in the journey.....	39
The attic	
<i>Balloon at home</i>	40
The master bedroom	
<i>Balloon and Forest at home</i>	44
The children's room	
<i>Kapoor and Forest at home</i>	48
The lounge	
<i>Kapoor at home</i>	52
The dining room	
<i>Kapoor at home</i>	54
<i>Sapporo at home</i>	58
The library	
<i>Shell at home</i>	60
Designers.....	64
Credits and Acknowledgements.....	65



home edition

We have brought together all our collections in a very special house where design, architecture and even literature intermingle perfectly with the history of the place itself.

Kapoor at home

Located at the entrance of the house the Kapoor pouf welcomes you to this space full of contrasts.

A meeting point between past and present, where the original elements are perfectly combined with the more contemporary ones.

Kapoor is a playful and dynamic pouf that brings a practical and cheerful touch to any room. As in this case, where it contributes to create an improvised small play corner next to the door.

This pouf incorporates concealed front wheels that allow, together with its handle-shaped backrest, to move it with little effort.



Kapoor pouf upholstered with Planum (411) fabric by Febrik and lacquered in Navy (NCS S5540-R90B) colour.



Connery at home

Looking inwards, we find two pieces from the Connery collection. Arranged on either side of the door that leads to the central area of the house, greeting the visitor with its elegant presence.

Both, chair and armchair, are presented in their natural beech finish, highlighting even more the nobility of the of the wood.

The Connery collection is a faithful reflection of the coexistence between past and present, a collection with a classy character that will remain young forever.

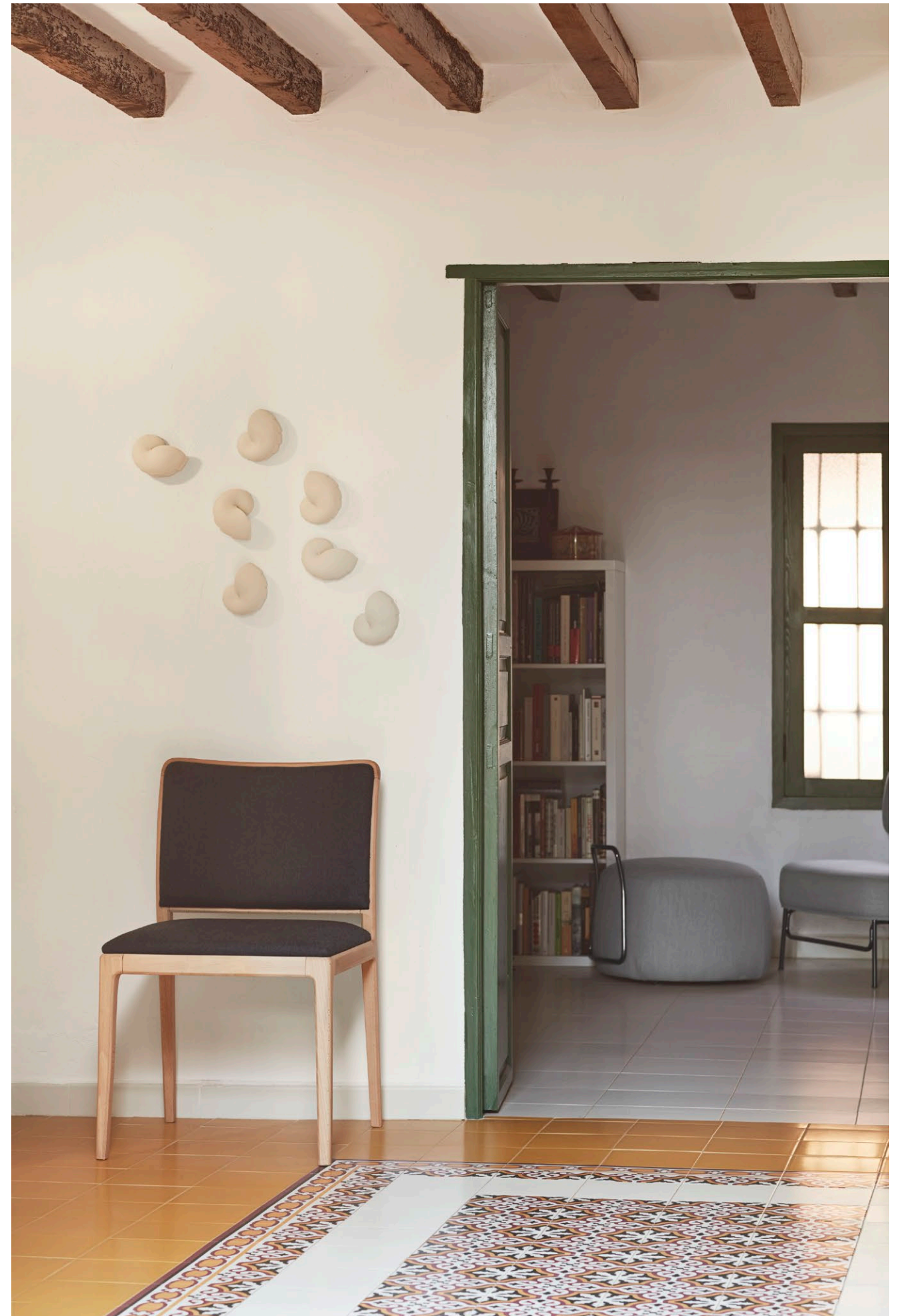
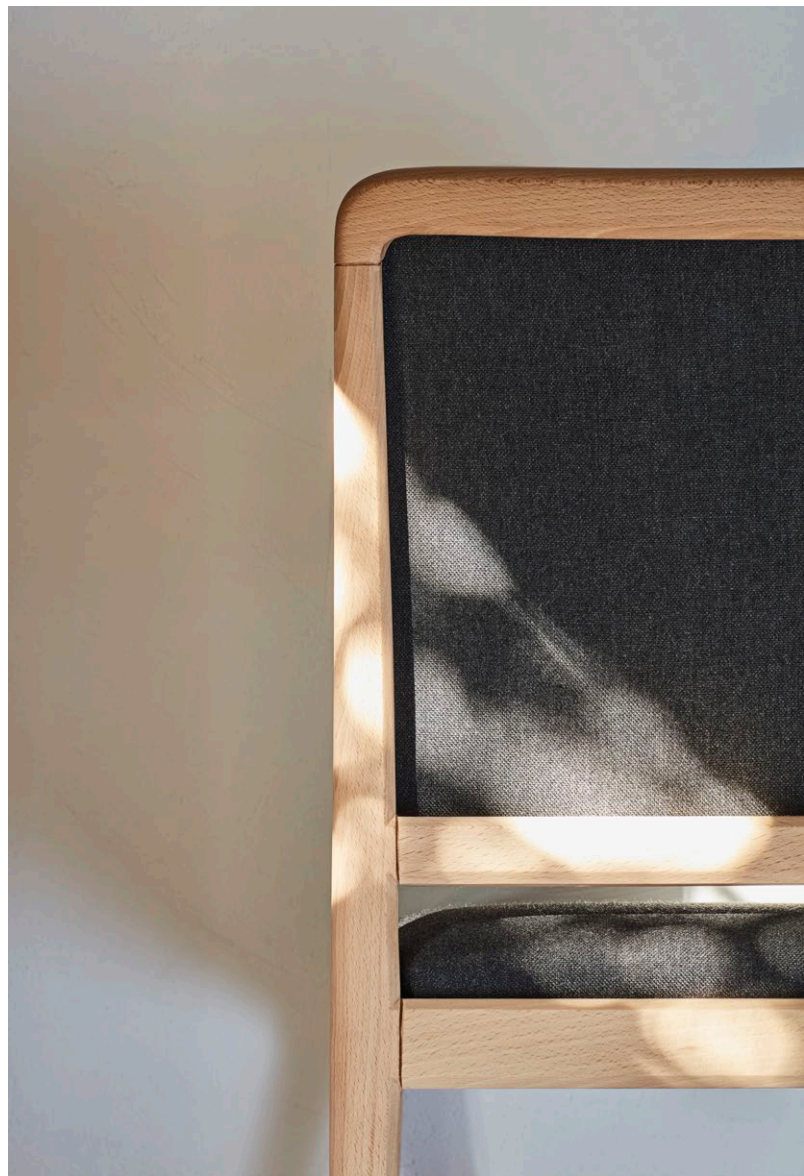
An artisan work in perfect harmony with the space.

Connery armchair upholstered with Arc (60) fabric by Crevin and finished in natural Beech.

Connery chair upholstered with Natte (Sooty) fabric by Sunbrella and finished in natural Beech.







Kapoor at home

The Kapoor collection stars in one of the most coveted scenes of the winter season.

In this small living room, by the warmth of the fireplace, where chatting, reading and playing games take place.

A meeting place where to take refuge and rest in which we find Kapoor in his most endearing side.

The pistachio green fabric evokes a brief memory of the route to the access, through which the whole garden is crossed, adding naturalness to the atmosphere.

Both pieces, lounge and pouf, exude personality, but on this occasion they remain in the background and are arranged to look at the real heart of the room, the fireplace.

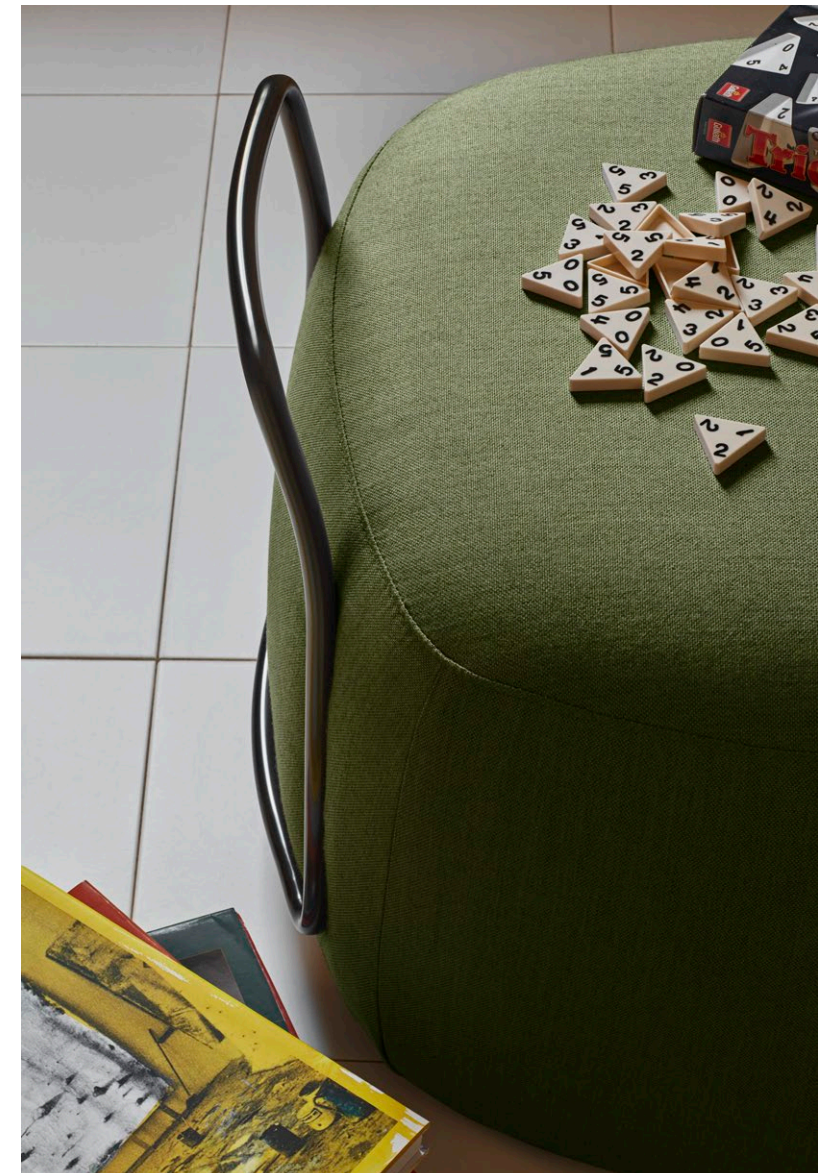
Kapoor lounge + pouf upholstered with Natte (Pistachio) fabric by Sunbrella and coated in Black Nickel.





“ *Great design is a multi-layered relationship between human life and its environment* ”

Naoto Fukusawa



Sapporo at home

The old kitchen, a renovated space that maintains the original elements under a clear premise, less is more.

The Sapporo collection fits perfectly into this fully functional space, with a range of colours that subtly contrasts and accompanies the rest of the elements.

A simple design that gives all the emphasis to the rounded wood, giving rise to a set that is easy to adapt and that satisfies the requirements of the space.

The result is a 1930s kitchen with a minimalist character.

Sapporo chair + chair with arms upholstered with Iris (61) fabric by Crevin and finished in natural Beech.

Sapporo table in natural Beech wood combined with Nude (NCS S1515-Y80R) lacquer colour.





Kapoor and Shell at home

The transition between the original house and its extension takes place in this space.

An open space from which it is possible to observe and understand the constructive evolution of the house.

As if it were a piece of art next to a colourful painting, Kapoor's award-winning lounge chair, accompanied by the pouf from the same collection, takes up a privileged position next to the window overlooking the interior courtyard.

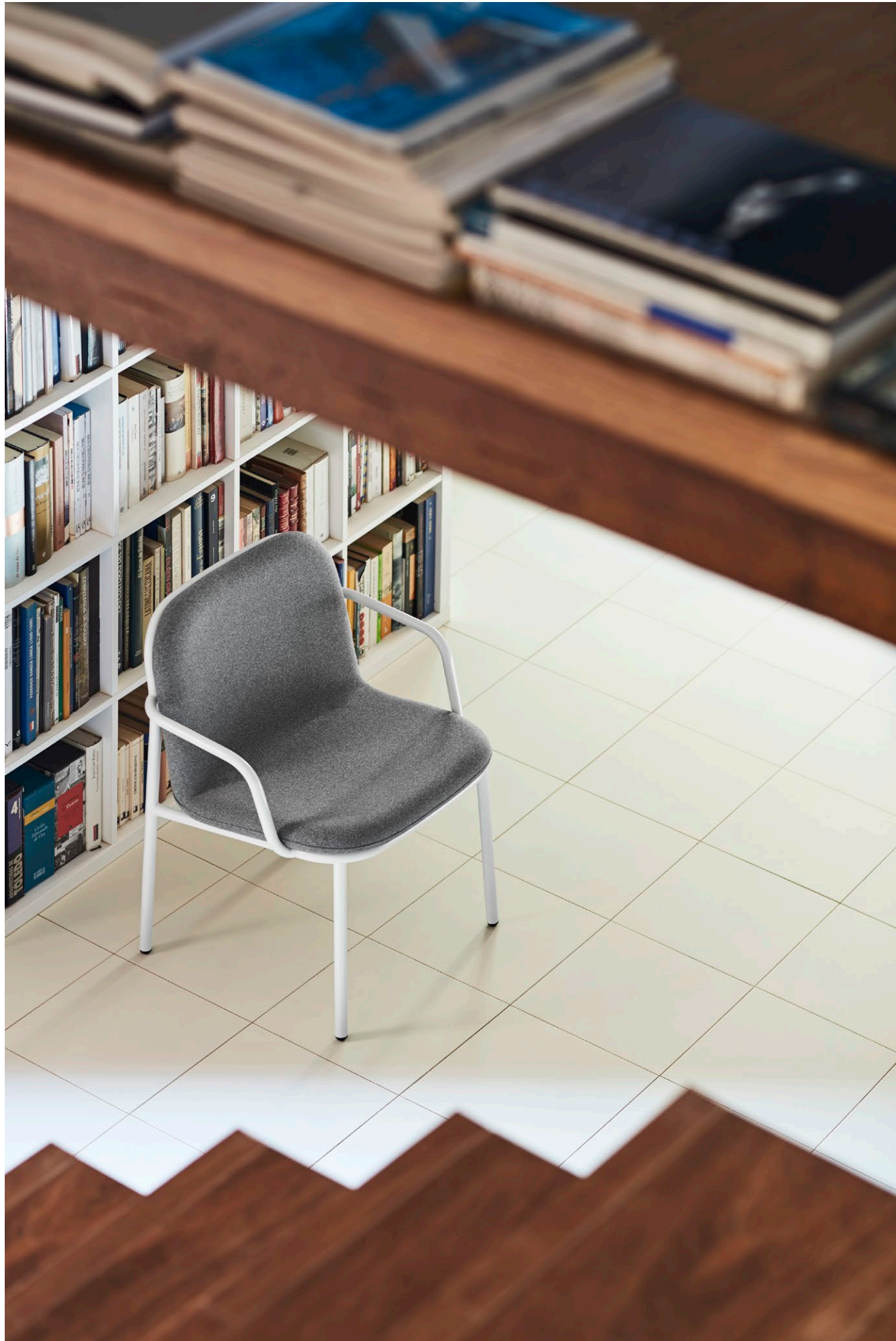
Just to the right of it, is the armchair of the Shell collection, giving way to the idyll of the house with books, which will be the indirect protagonists of the tour.



Kapoor lounge + pouf upholstered with Natte (Grey Chiné) fabric by Sunbrella and coated in Black Nickel.

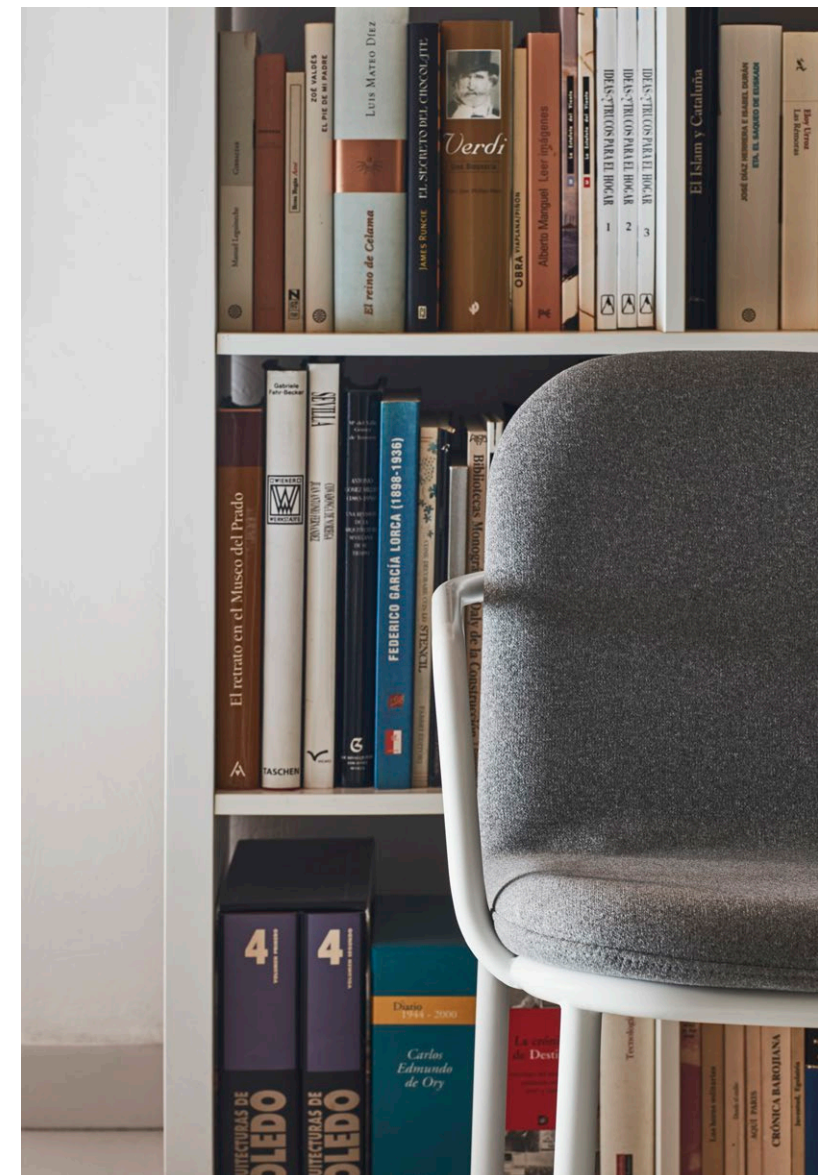
Shell lounge chair with armrest upholstered with Moss (51) fabric by Crevin and lacquered in White colour.





“ *To travel far, there is no better ship than a book*

Emily Dickinson



Shell at home

The natural light of the Mediterranean floods the library. A whole life summed up in this large collection of books and magazines that serve as both inspiration and company.

Shell, characterised by its clean and simple lines, dialogues and complements this space in an impeccable way.

A very versatile collection with a wide variety of options that allows the finishes to be perfectly integrated into any interior. As on this occasion, in which there is a visual continuity between the fabric and the metal carpentry, the oak and the flooring.

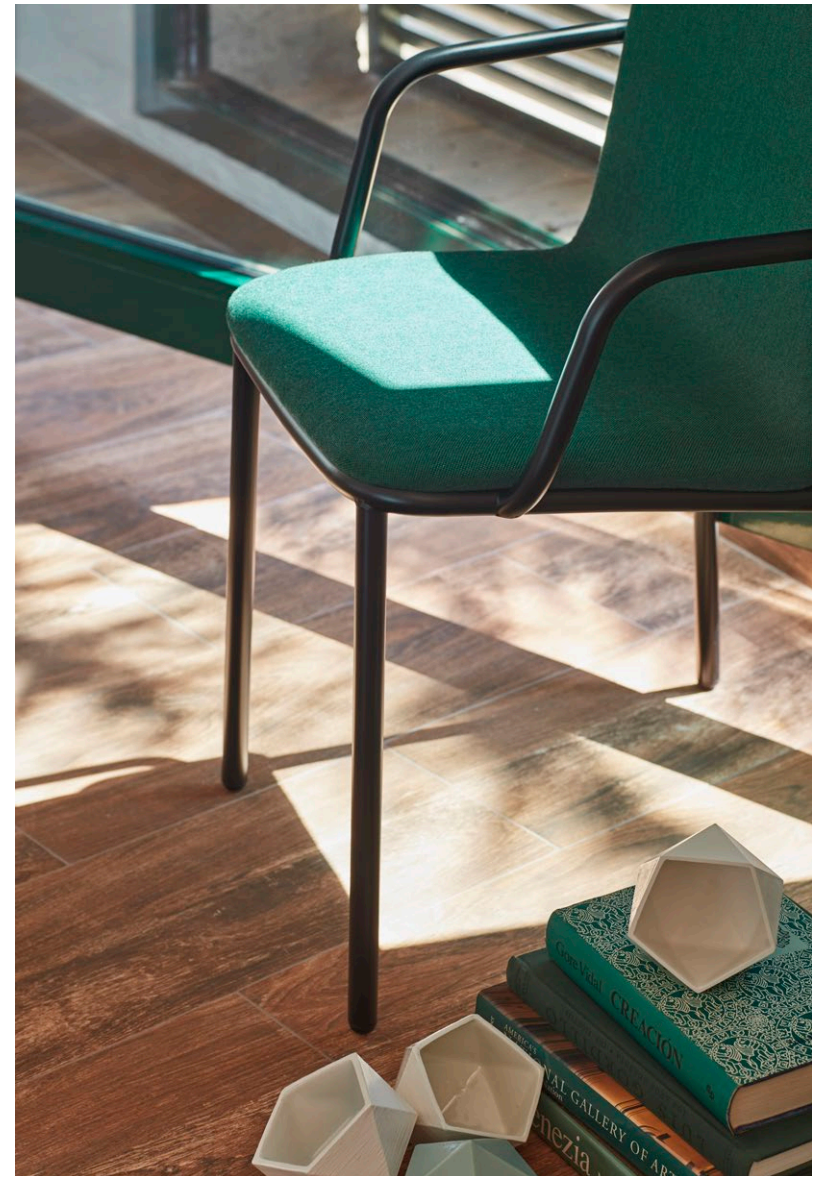
A space in which Shell maximises its potential.

An oasis of peace for remote working.

Shell chairs with armrest upholstered with Natte (Ivy) fabric by Sunbrella and lacquered in Black colour.

Shell stool finished in Oak and lacquered in Black colour.







Kapoor at home

Next to the work area there is an explosive looking space.

The Kapoor collection brings a note of contrast here, creating an environment where there are no rules, where the chosen finishes play an important role in adding vitality and freshness.

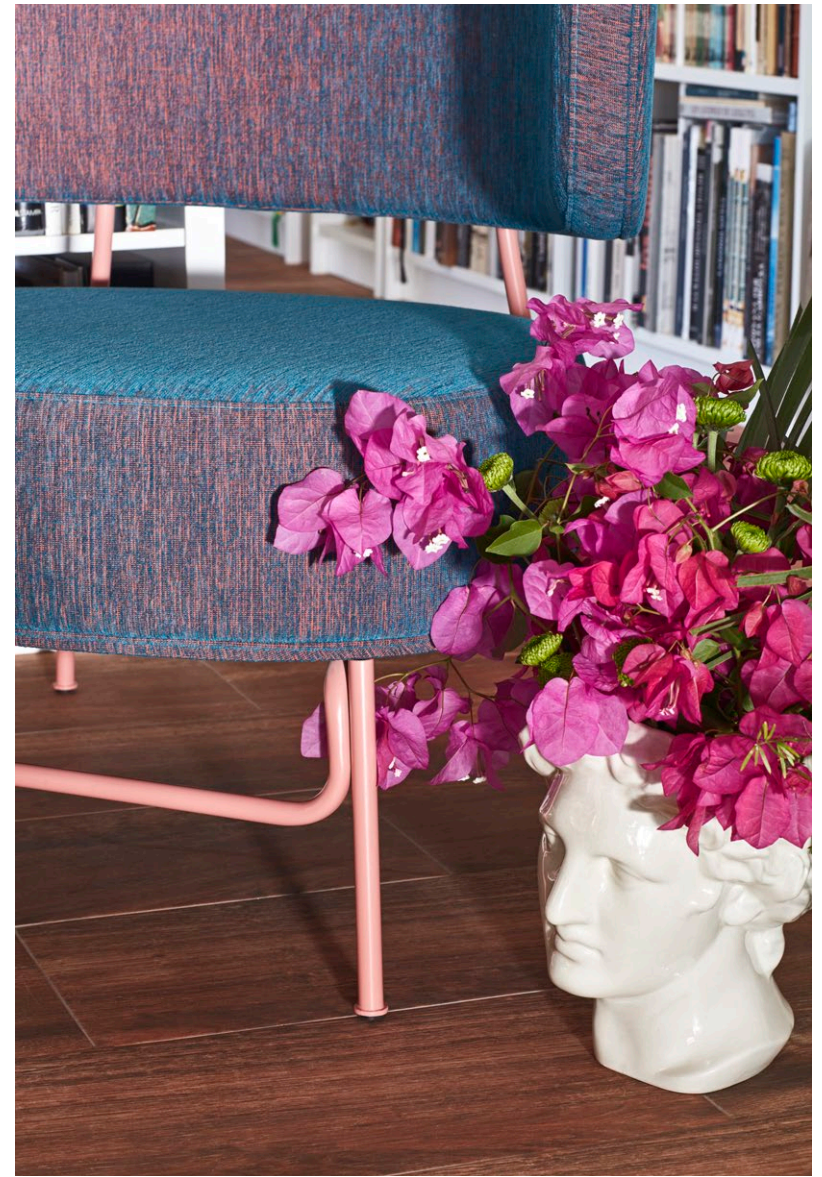
The wing lounge chair, with its characteristic large curvature, offers the perfect envelope, waiting to welcome the next guest.

The ideal place to continue working in search of inspiration, or even to disconnect for a while.

Kapoor wing upholstered with Platform (Horizon) fabric by Sunbrella and lacquered in Coral (NCS S2040-Y80R) colour.

Kapoor auxiliary table finished in Birch wood and lacquered in Coral (NCS S2040-Y80R) colour.





Balloon at home

Next to a large window, this privileged corner overlooking the pine forest is created, where the Balloon collection contributes to provide a peaceful feeling of relaxation.

Balloon is based on the idea of the contrast between a rigid element against a soft and spongy one, a visual detail that plays with our senses, and that together with its characteristic rounded shapes, transmits a pleasant comfort.

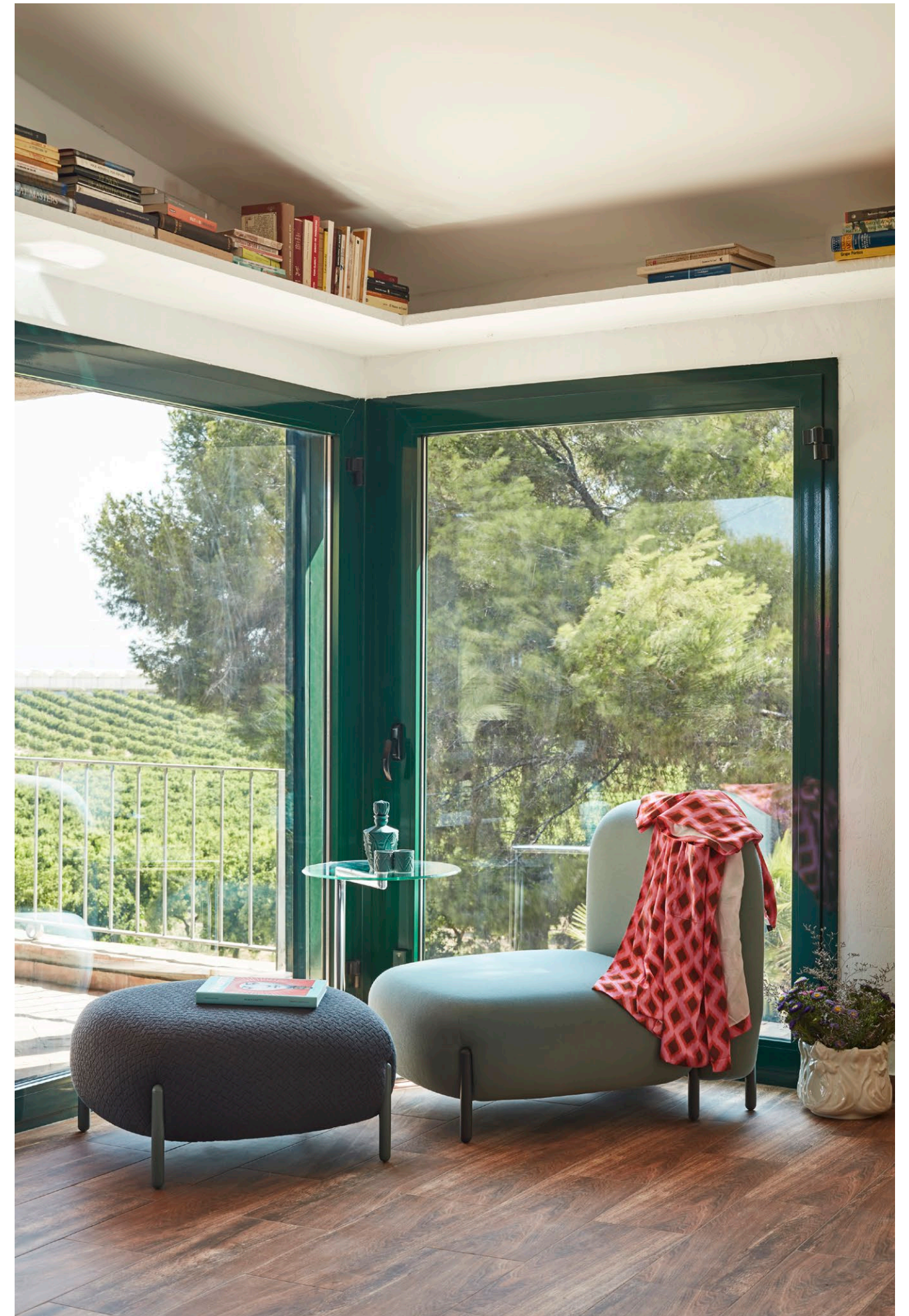
Comfort and views come together in this space.

A place to enjoy and relax surrounded by the wonderful Mediterranean landscape.



Balloon big lounge chair upholstered with Planum (921) fabric by Febrik and lacquered in Graphite (NCS S7500N) colour.

Balloon big pouf upholstered with Arc (53) fabric by Crevin and lacquered in Ash (NCS S5010-B90G) colour.



**“ Architecture is a
matter of harmonies,
a pure creation of
the mind**

Le Corbusier



A break in the journey

The house is characterised by its fluidity between its different spaces and their own relationship with the surroundings.

Each room is associated with a different part of the garden or the inner courtyard, bringing nature in, stimulating the senses.

Scenes that are presented in a successive manner, promoting circulation.

A route accompanied by light, colour and pieces of furniture.

Furniture that plays an important role, adapting to the needs of each space.

Timeless pieces that dialogue with the surrounding environment, collaborating in that feeling of comfort that transforms the house into a home.



Balloon at home

In this attic area next to the bay window is the medium-sized model from the Balloon collection enjoying this small lookout to the sea.

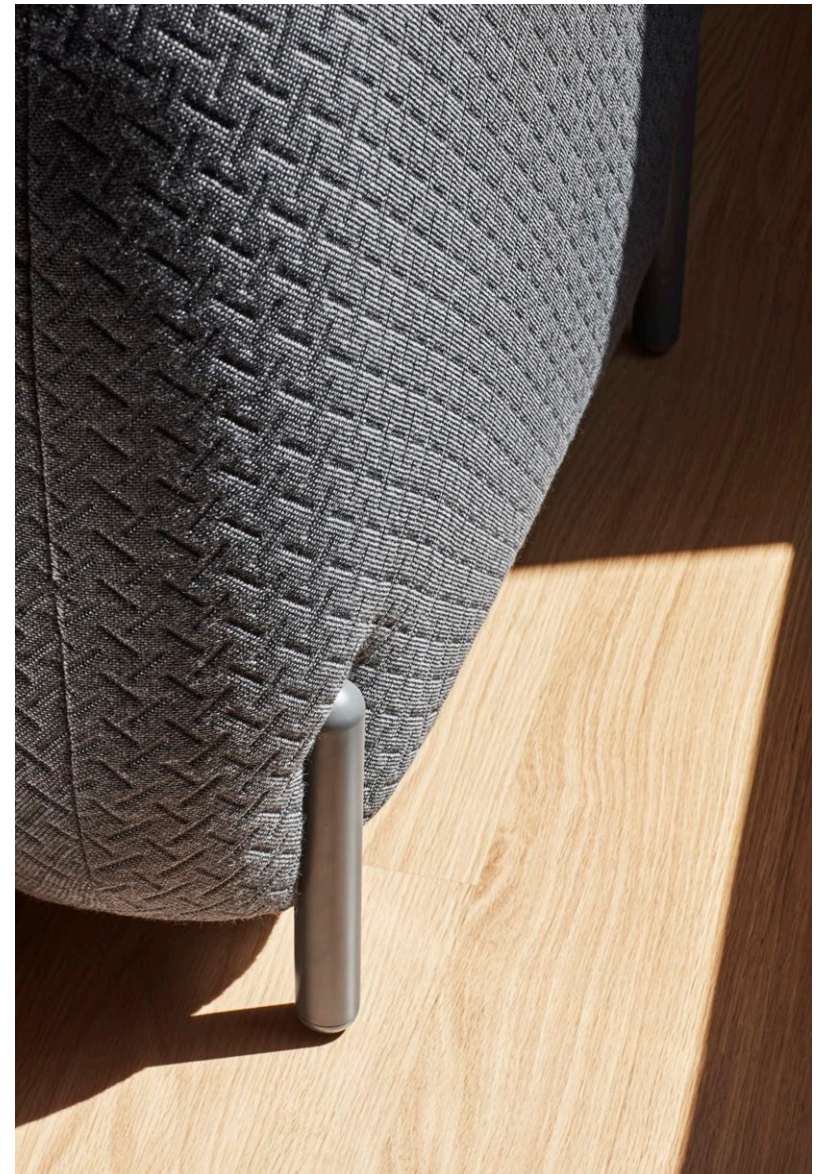
A quiet space in which Balloon makes a clear invitation to calm.

This soft seat, with its rounded contour, is the centrepiece of a scene that evokes an unquestionable stillness.

As if time had stopped for a moment in this room, where the curves of the piece contrast harmoniously with the verticality of the window

Balloon medium lounge chair upholstered with Arc (53) fabric by Crevin and lacquered in Graphite (NCS S7500N) colour.





Balloon and Forest at home

The master bedroom is one of the most emblematic rooms in the house.

A generous space with a sculptural marble bathtub with which the Balloon and Forest pieces create a close relation.

The Forest room divider, made up of a light and easy to move metal plate structure, divides the space providing privacy without detracting light thanks to its 3D fabric, which generates a play of light and shadows that will vary throughout the hours.

The Balloon pieces are perfectly in tune with this room, offering a respite from the hustle and bustle of everyday life.

Balloon small lounge chair + small pouf upholstered with Nitto (107) fabric by Febrik and lacquered in Black colour.

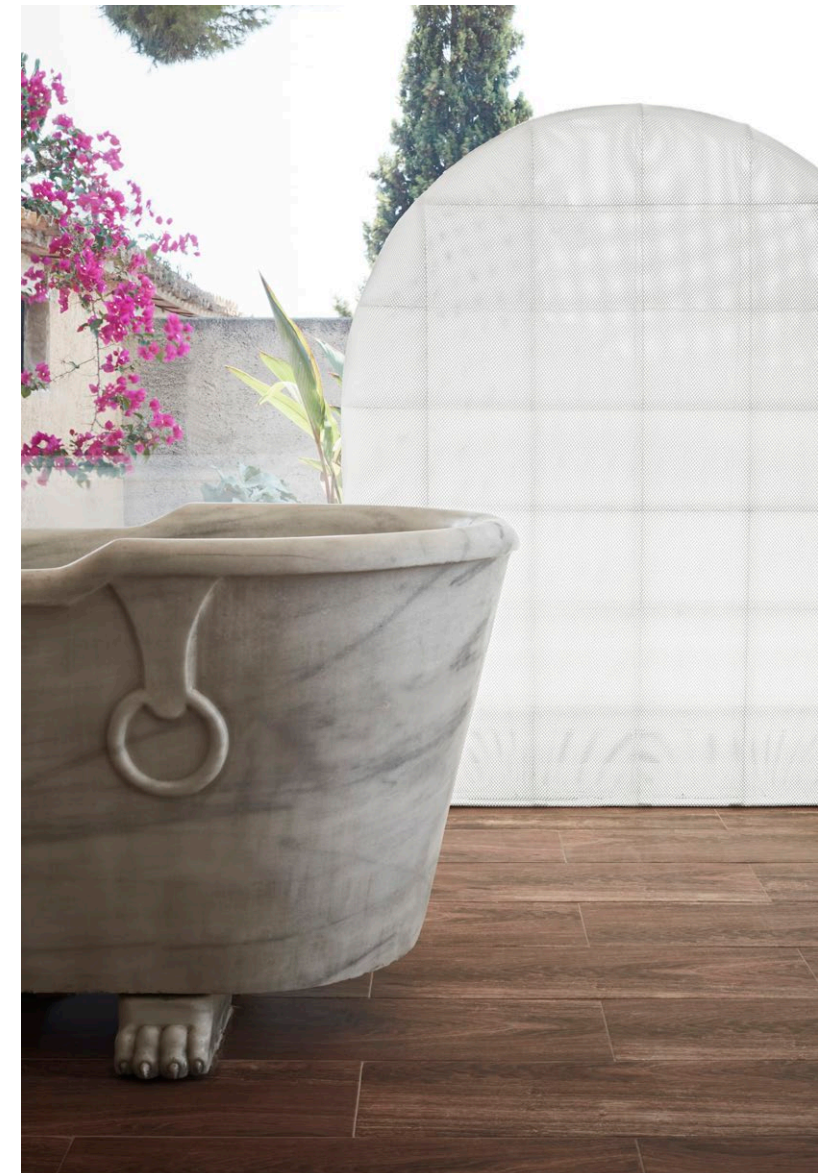
Forest medium sized room divider with White 3D fabric.





**“Who is to say that pleasure
is useless?”**

Charles Eames



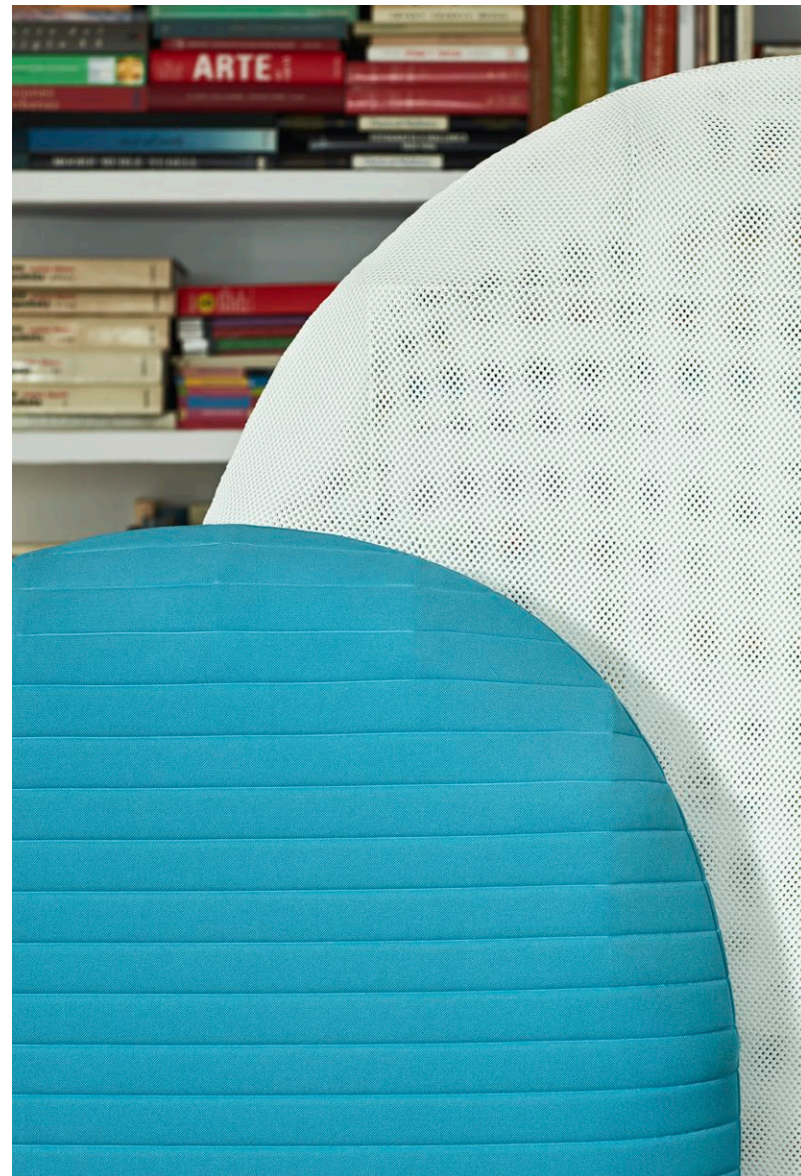
Kapoor and Forest at home

The Kapoor and Forest collections join forces to create this comfortable and functional corner in the children's room.

A small zone is delimited, leaving a semi-enclosed area that invites the user to have fun, read, play...

Forest offers extra insulation thanks to its acoustic version, which includes a sound-absorbing panel inside.

An open but private space that becomes the ideal refuge for the youngest members of the family.

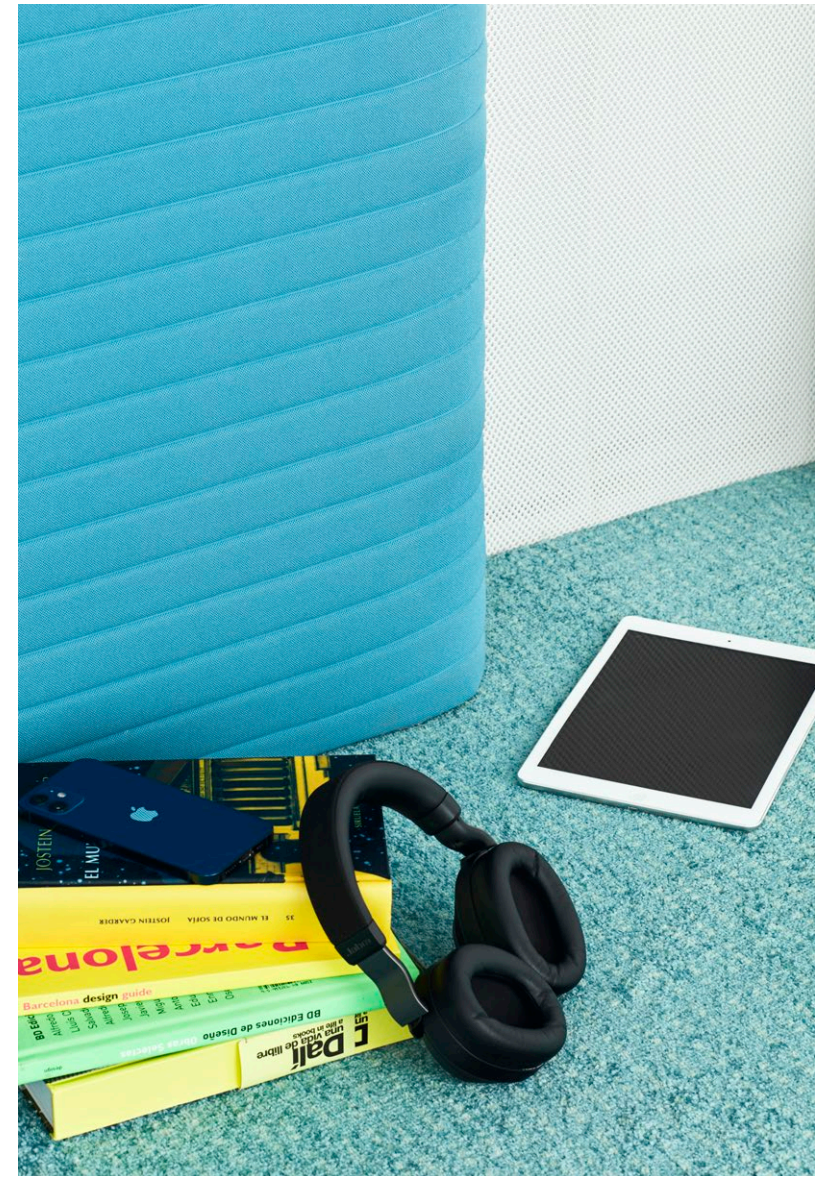


Kapoor pouf upholstered with Galaxy (43) fabric by Crevin and lacquered in Coral (NCS S2040-Y80R) colour.

Forest medium sized room divider with white 3D fabric.

Forest small sized room divider with Atlantic Stripe 40 (66063) fabric by Gabriel.





Kapoor at home

The Kapoor collection welcomes us back and leads us into the living room.

This space, which was originally the barn, has been renovated and converted into this spacious and luminous living room in which the two wing pieces, together with the auxiliary table, create a pleasant atmosphere. Ideal for reading a book or enjoying a good coffee.

A living room with a Mediterranean feel in which colour plays an important role.



Kapoor wing upholstered with Velvety (43) fabric by Crevin and coated in Cooper.

Kapoor auxiliary table with sintered stone Sofia Cuprum Steel Touch by Neolith and coated in Cooper.



Kapoor at home

Associated with the central courtyard of the house is this small corner furnished with stools from the Kapoor collection and its high table.

A location that allows you to enjoy the views and even interact with them.

On sunny days and thanks to a roofed area, the pieces are occasionally taken outside during the aperitif.

An idyllic setting in which the Kapoor stools are framed by a beautiful bougainvillea.

Kapoor stools upholstered with Galaxy (60) fabric by Crevin and lacquered in White colour.

Kapoor high table lacquered in White colour.





“ *A design isn't finished until
someone is using it*

Brenda Laurel



Sapporo at home

In a clear nod to its former use as a barn, this dining room is conceived in the purest rustic style.

Soft colours that harmonise with the naturalness of the wood and stone of the floor combined with small notes of colour that contrast with the warmth of the environment.

Natural lighting floods the entire room, playing with the texture and roughness of the walls.

A scene in which the armchair from the Sapporo collection is fully integrated, creating a cosy place to share and celebrate with family and friends.



Sapporo armchair upholstered with Divina Melange 3 (457) fabric by Kvadrat and finished in Walnut tone.

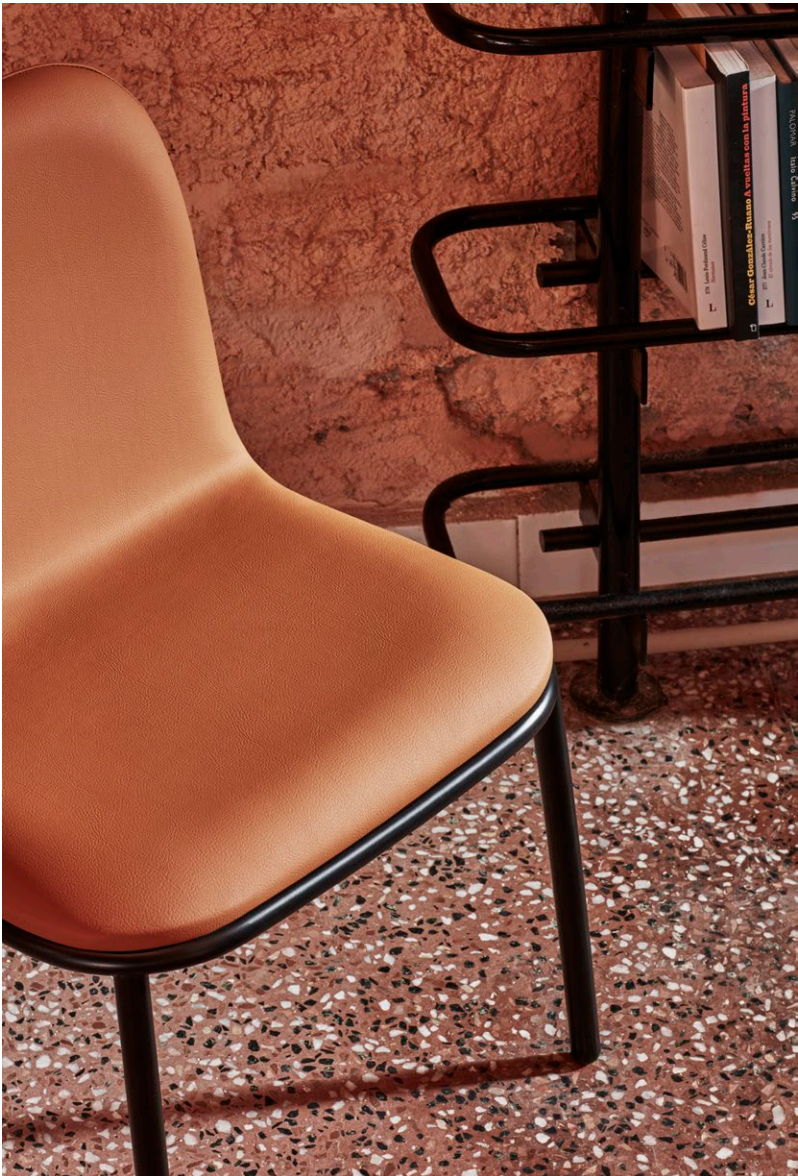


Shell at home

In the old stables, an area is set aside for a small library.

The Shell collection, in perfect harmony, blends in with the metallic shelving that surrounds the room.

A space connected to the inner courtyard, where the natural light itself offers perfect corners for sitting down to browse through a book or a magazine.



Shell lounge chair upholstered with Valencia (Terracotta) fabric by Spradling and lacquered in Black colour.

Shell chair finished in Oak and lacquered in Black colour.





Designers

BambúStudio: *Shell*

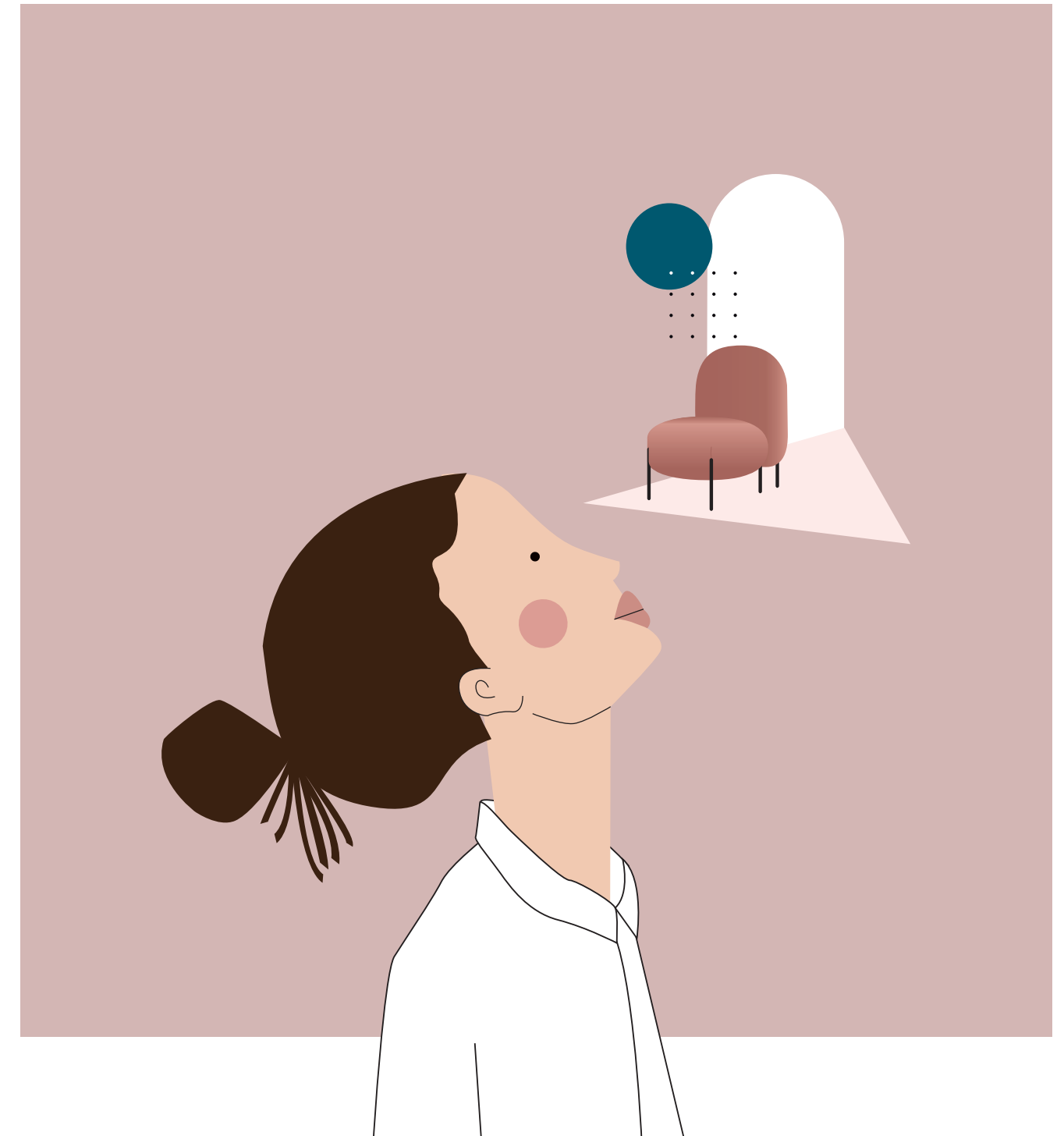
Studio founded by Javier Moreno. His approach to design is based on creating understandable, useful and memorable products, achieving the best result using less, with a simple vision and close to the user.

Clap Studio: *Balloon y Forest*

The studio is led by Jordi Irazo, creative director, and Àngela Montagud, technical architect. Combining the creativity of one and the technical skills of the other, Clap designs according to clear values: simplicity, elegance and playfulness. Focused on the design of experiences.

Santiago Sevillano Studio: *Kapoor, Sapporo and Connery*

Studio founded by Santiago Sevillano. With a non-conformist character, the studio takes care of its designs down to the smallest detail, adapting and advising each client according to their needs.



Art Direction:
Mar Vera
.annud studio

Illustrations:
Mercedes Camacho

Photography:
Cualiti

Acknowledgements:
Tárraga Family
María de Andrés
Wever&Ducré

.annud
@annud.concept
www.annud.es